

U.S. & Arizona Demographic Trends

For Arizona Board of Regents

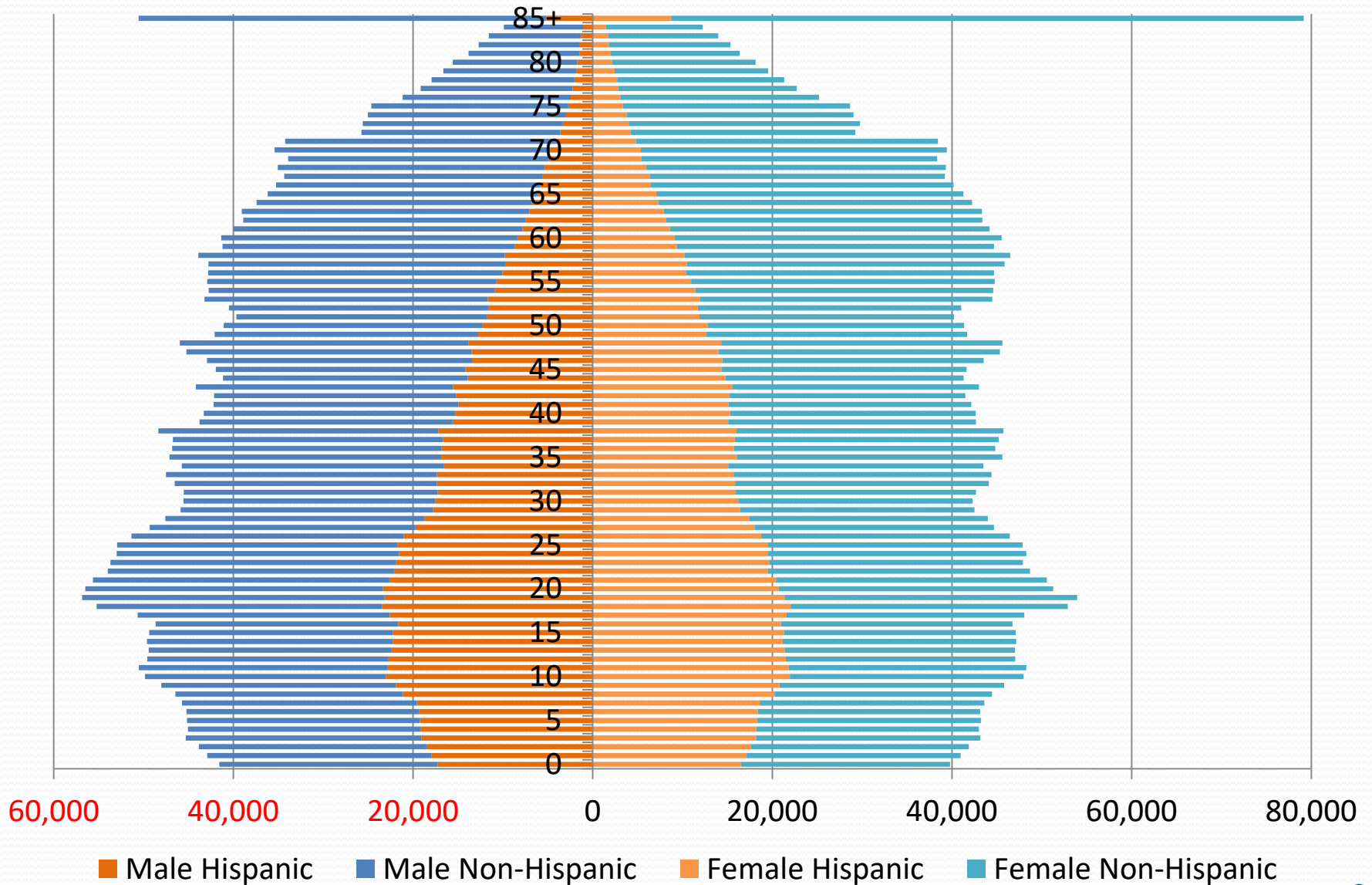
By Arizona Office of Economic Opportunity

Jim Chang, State Demographer

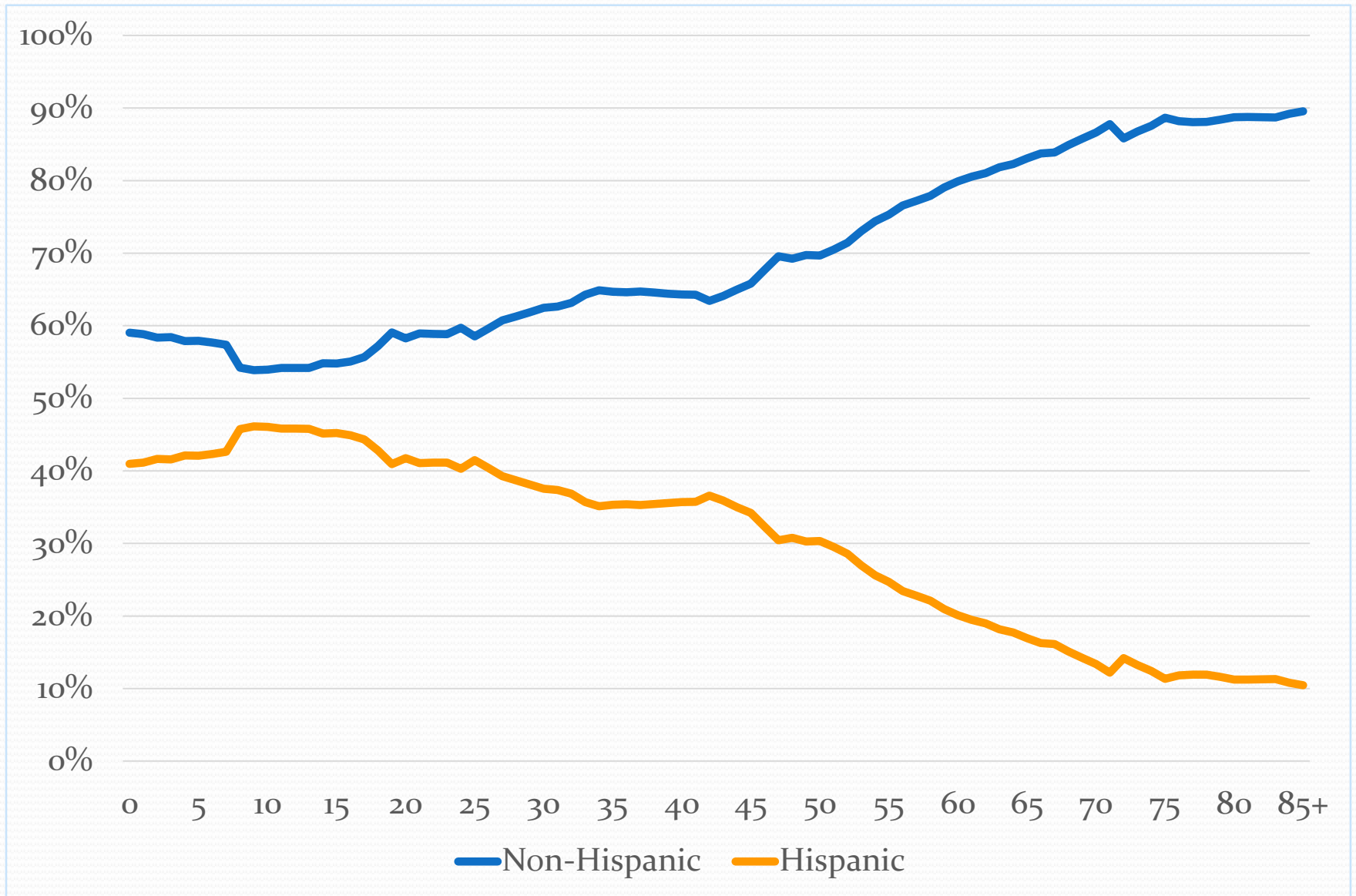
Thara Salamone, Demographer

April 12, 2019

Arizona Population Pyramid, 2018

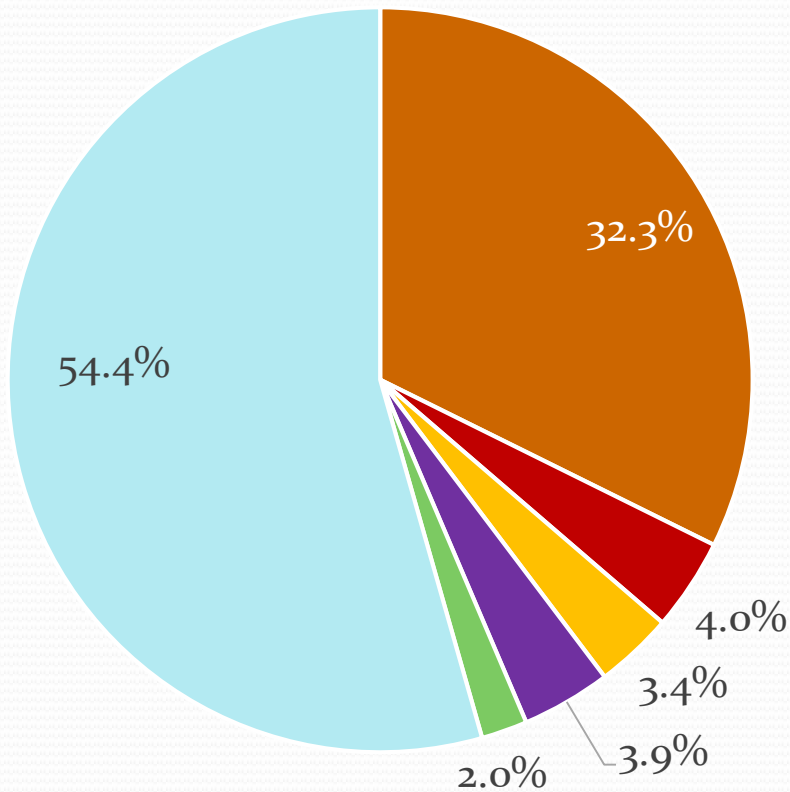


Arizona Population, 2018, Hispanic Origin by Age

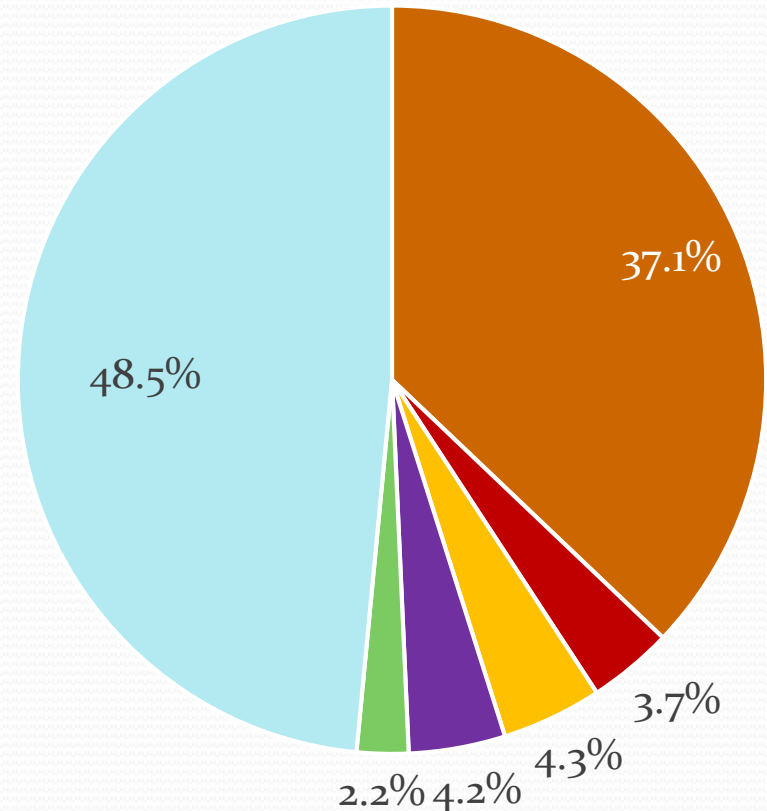


Arizona Population by Race and Hispanic Origin

2018, All Ages



2035, All Ages

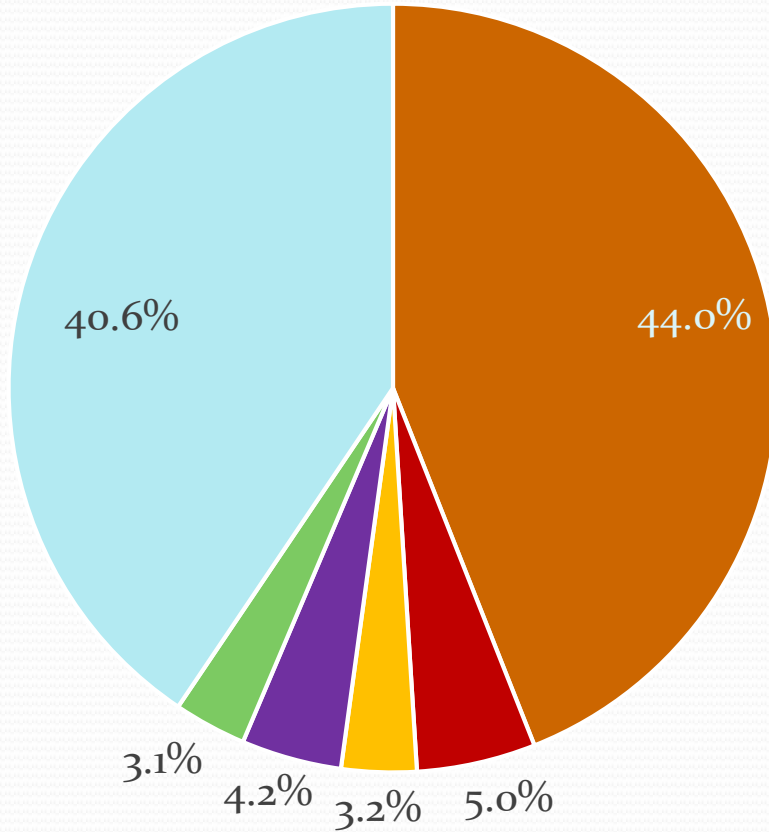


Hispanic Am Indian Asian
Black Other White

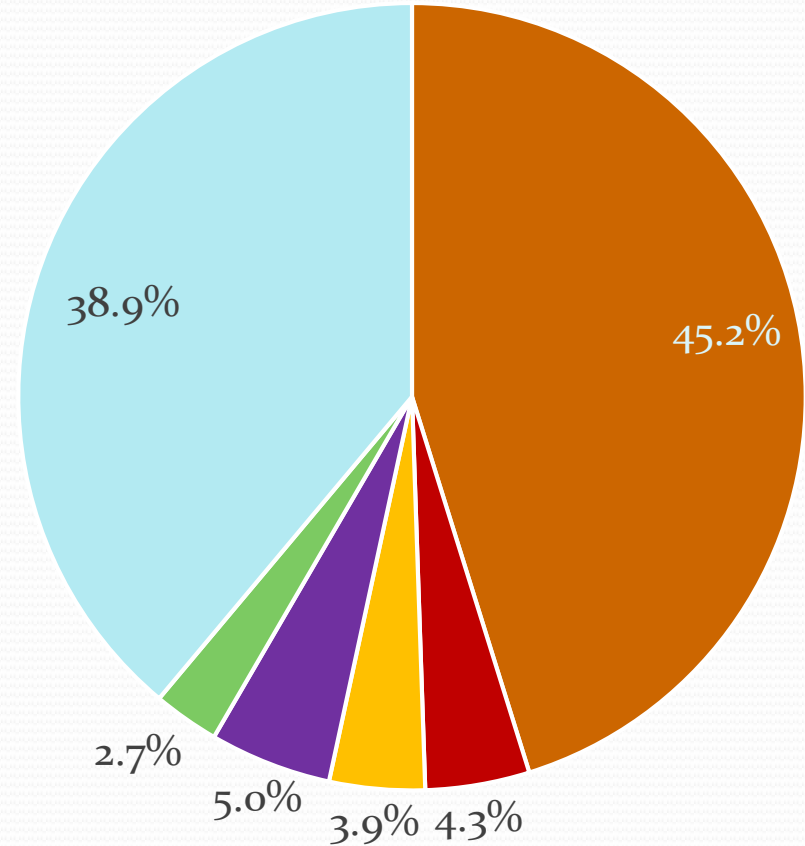
Hispanic Am Indian Asian
Black Other White

Arizona Population by Race and Hispanic Origin

2018, Ages 0-17



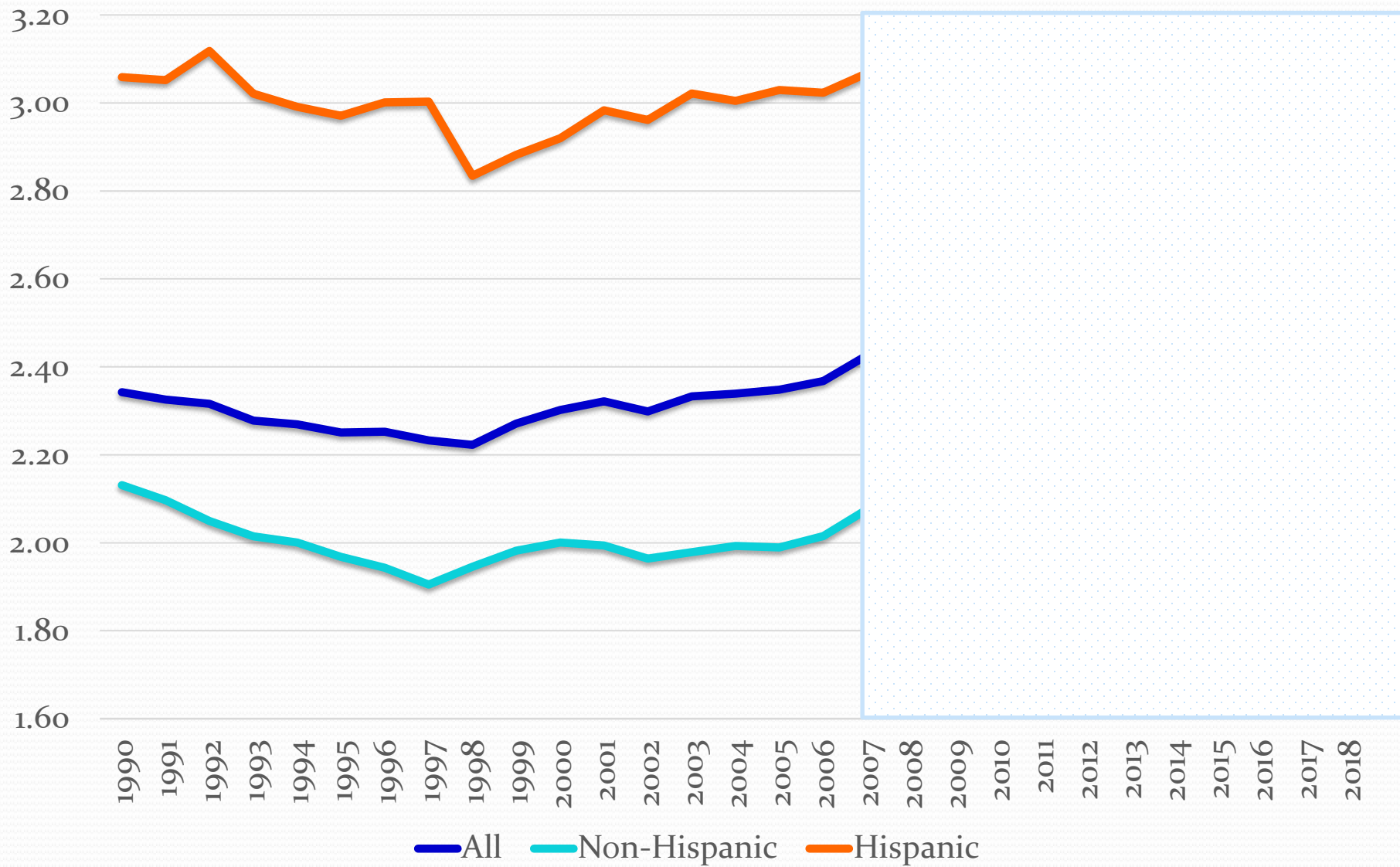
2035, Ages 0-17



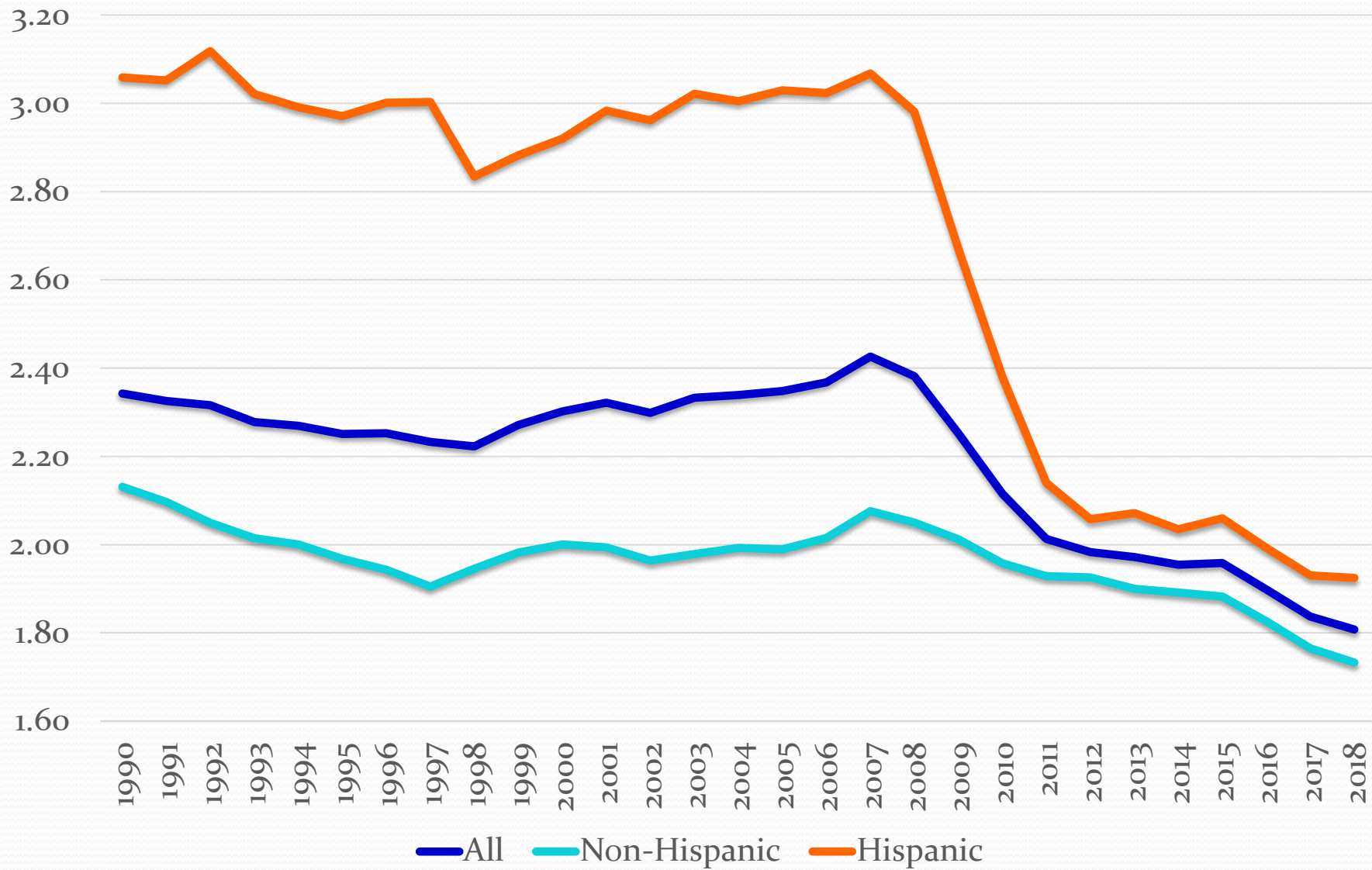
■ Hispanic ■ Am Indian ■ Asian
■ Black ■ Other ■ White

■ Hispanic ■ Am Indian ■ Asian
■ Black ■ Other ■ White

Arizona Total Fertility Rates, 1990 - 2018



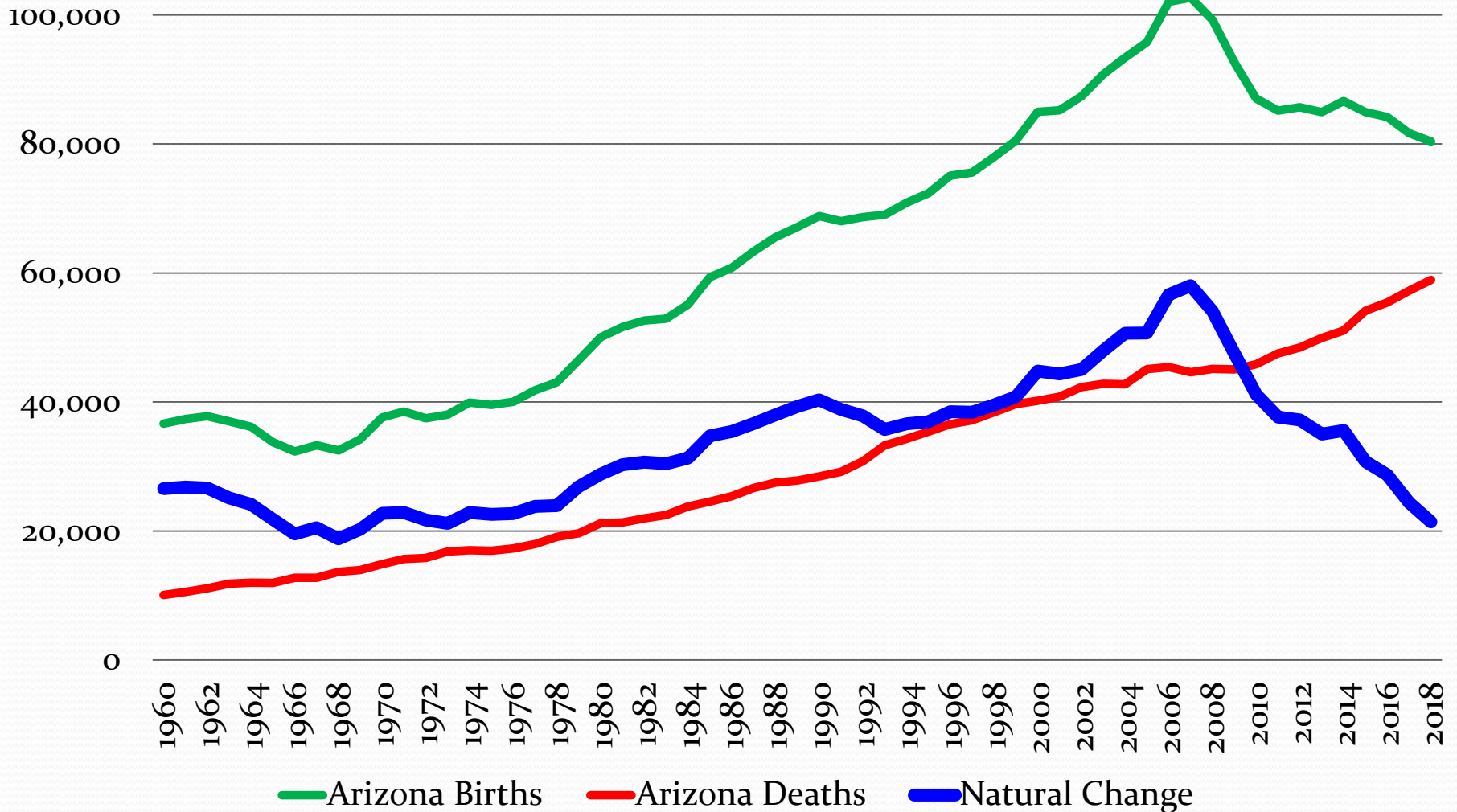
Arizona Total Fertility Rates, 1990 - 2018



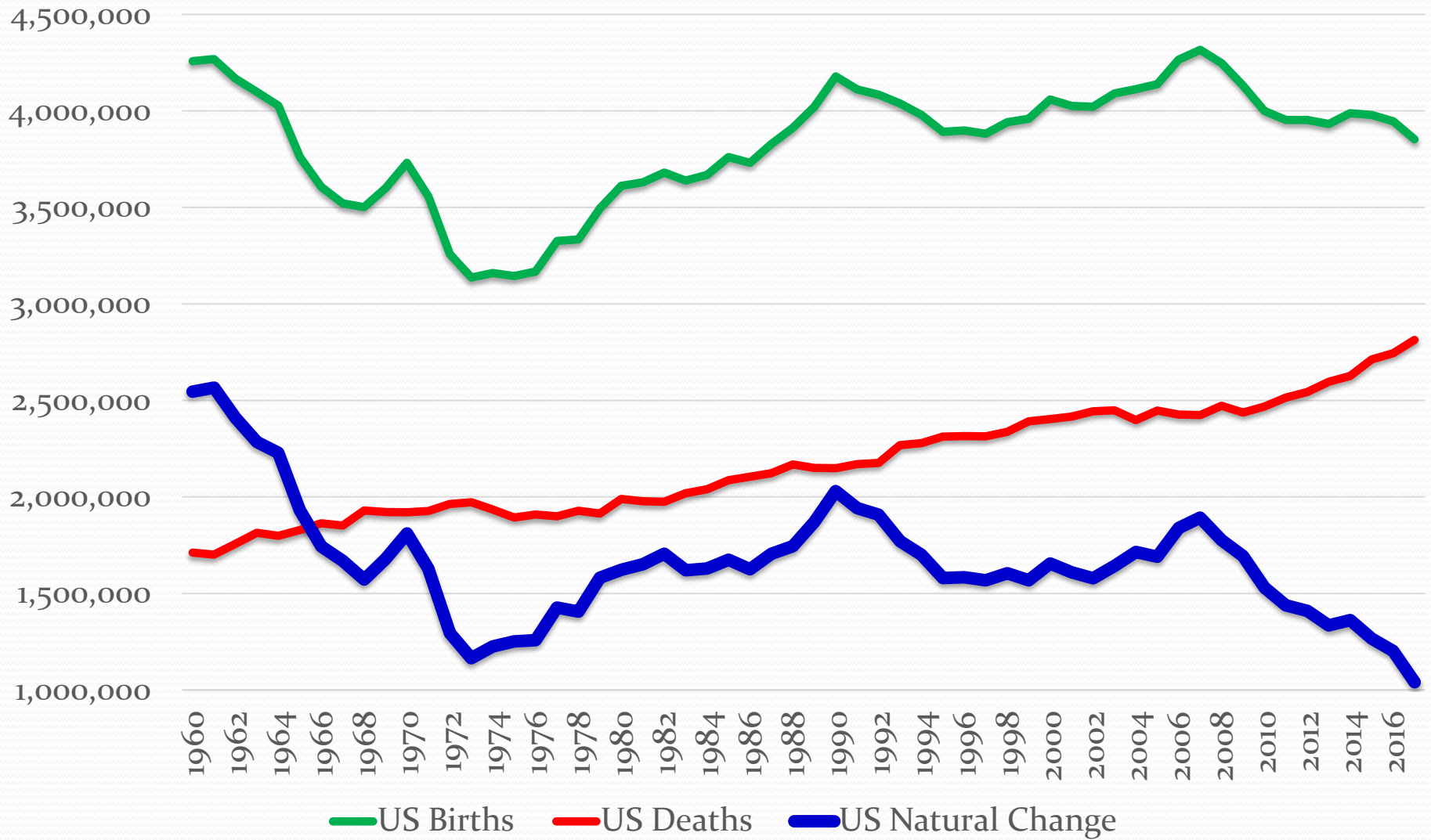
Arizona Total Fertility Rates, 2007 - 2018



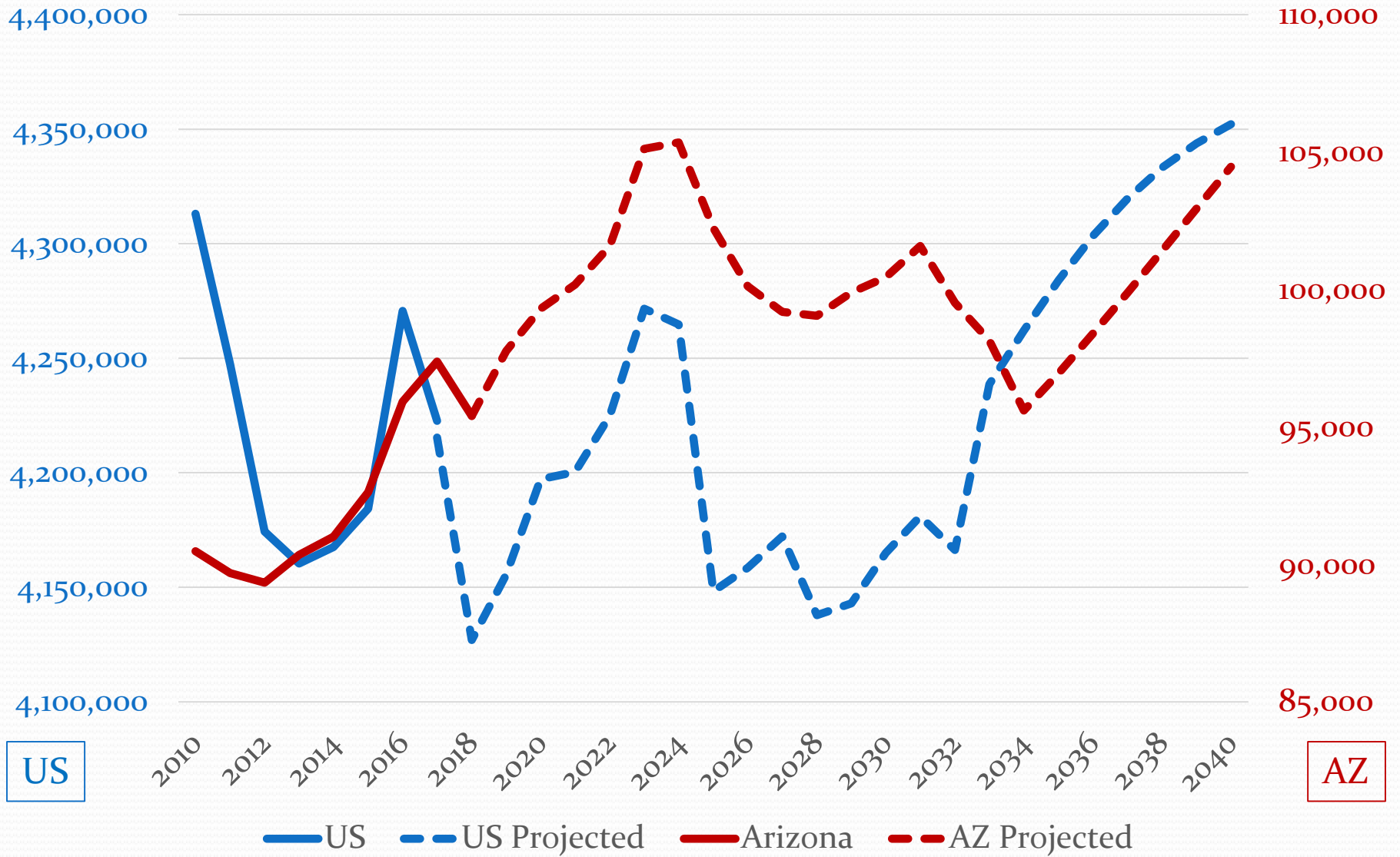
Arizona Births, Deaths, and Natural Population Change



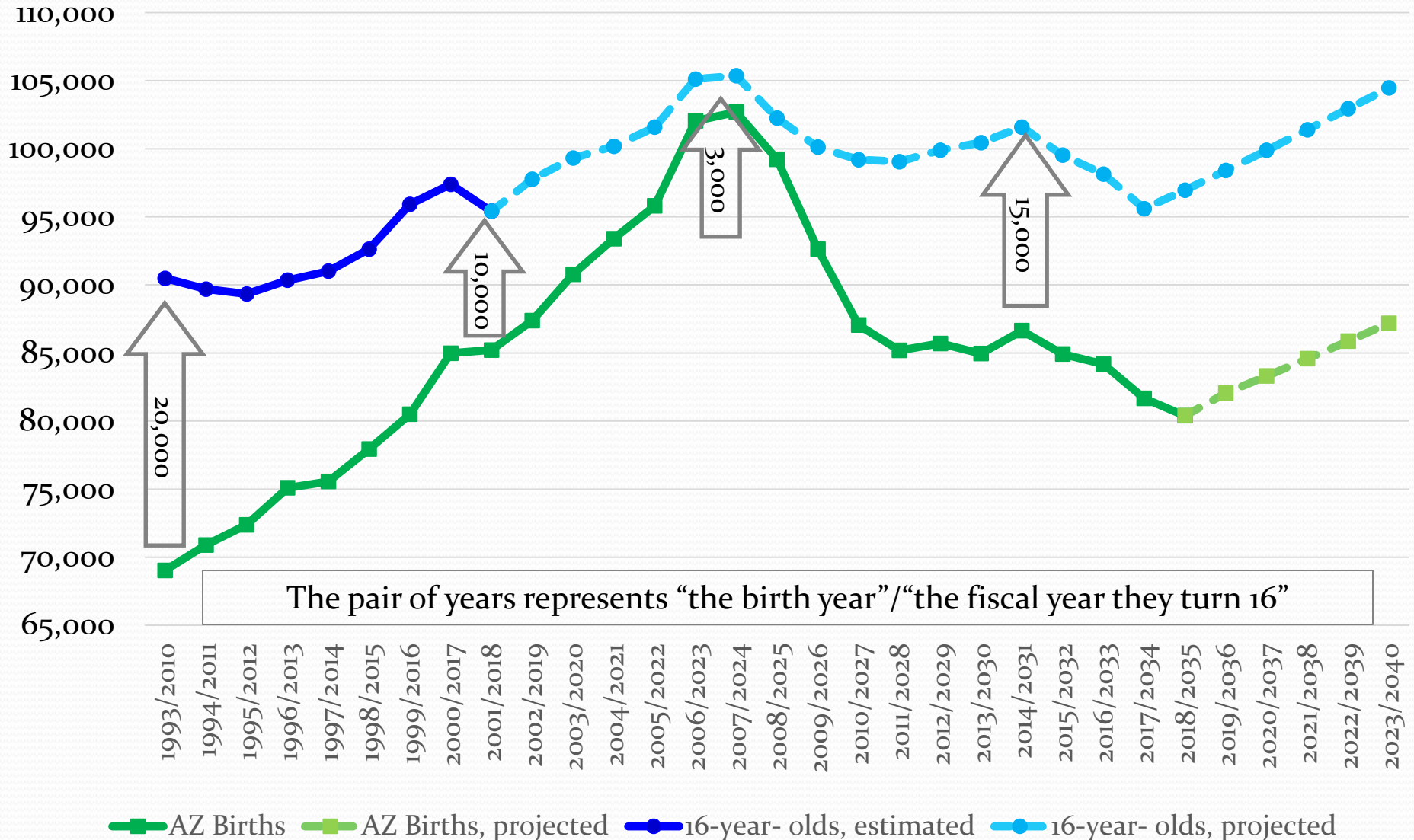
U.S. Births, Deaths, and Natural Population Change



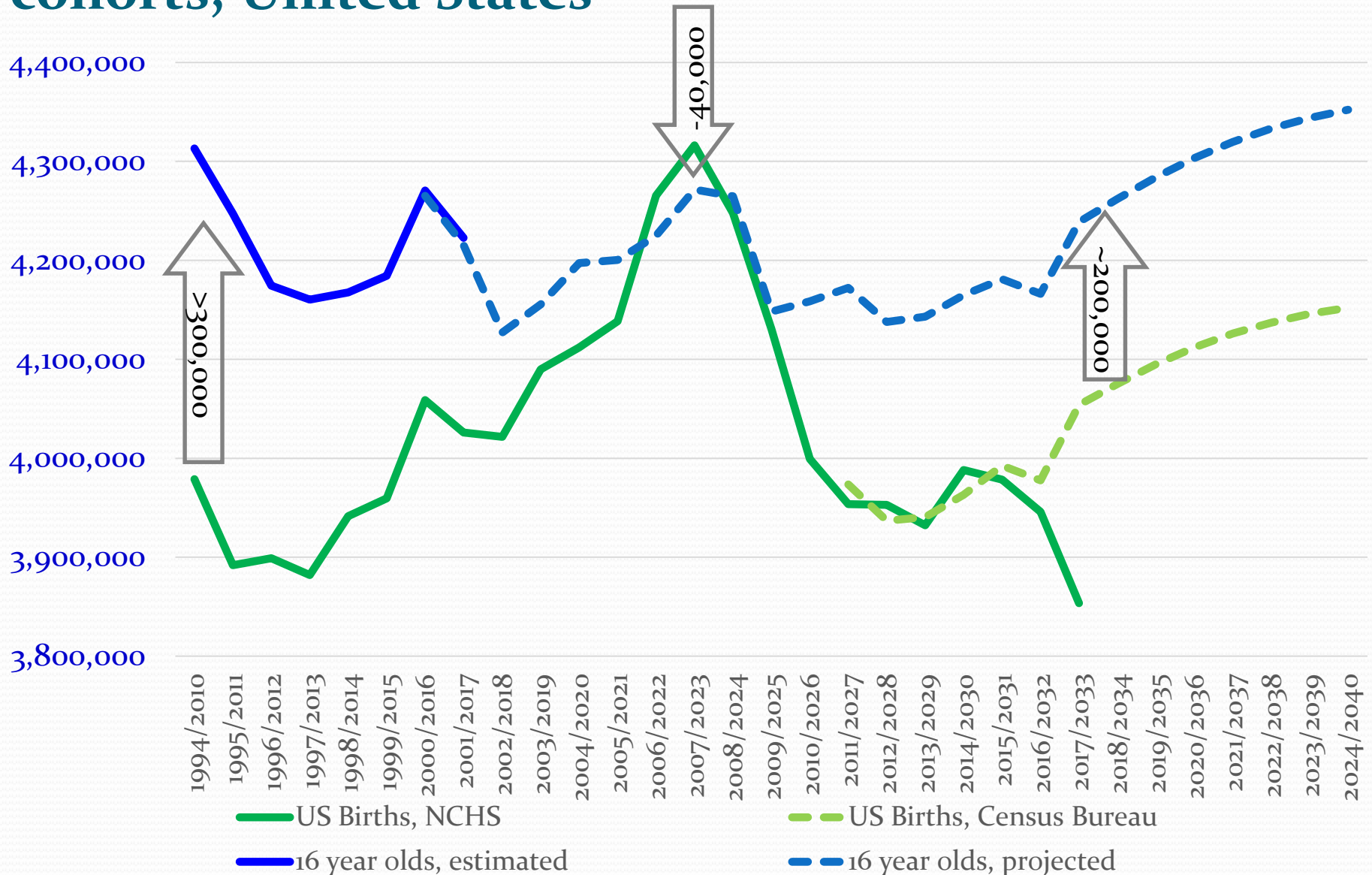
Population of 16 year olds, Arizona and United States



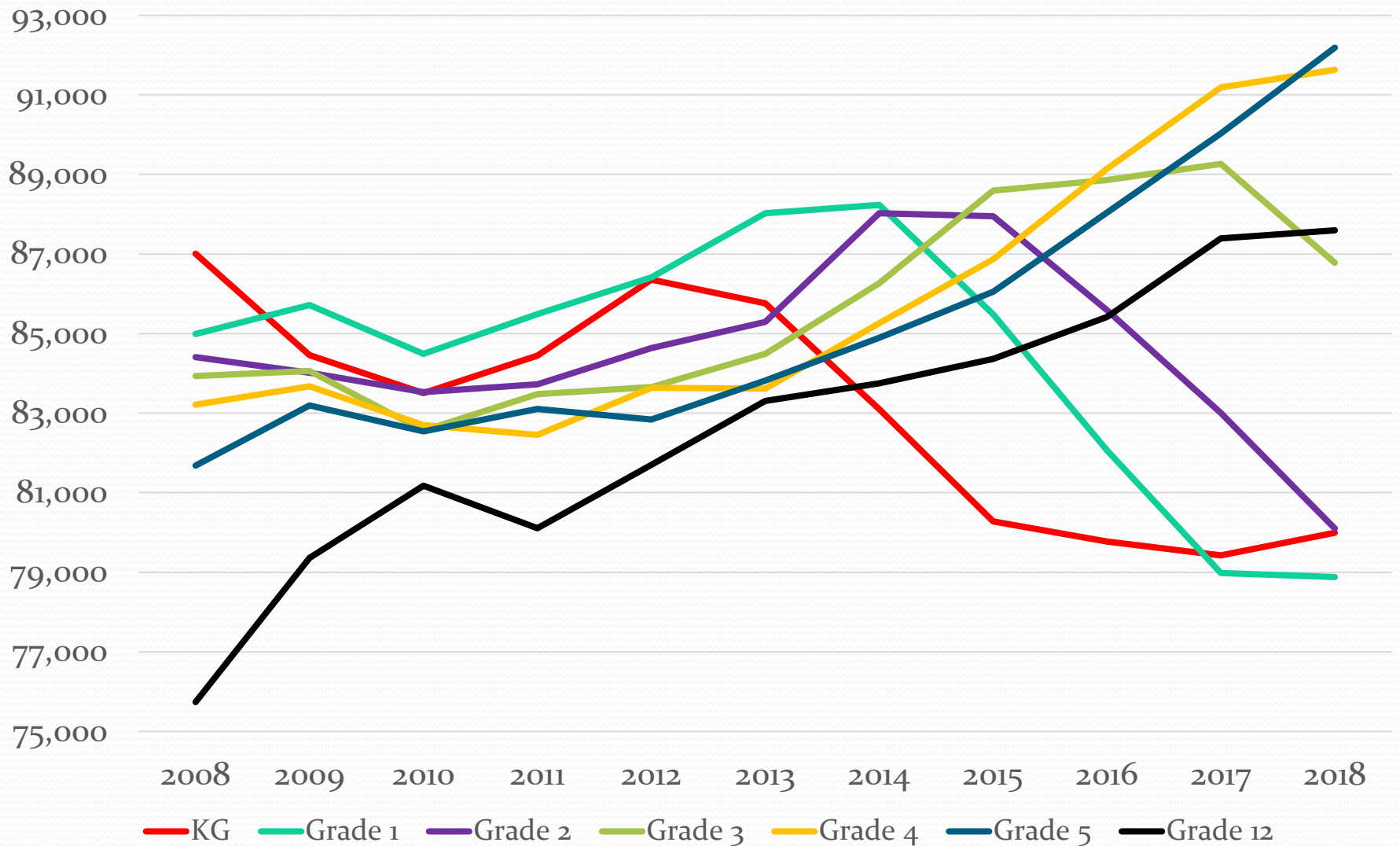
Population of 16 year olds and corresponding birth cohorts, Arizona



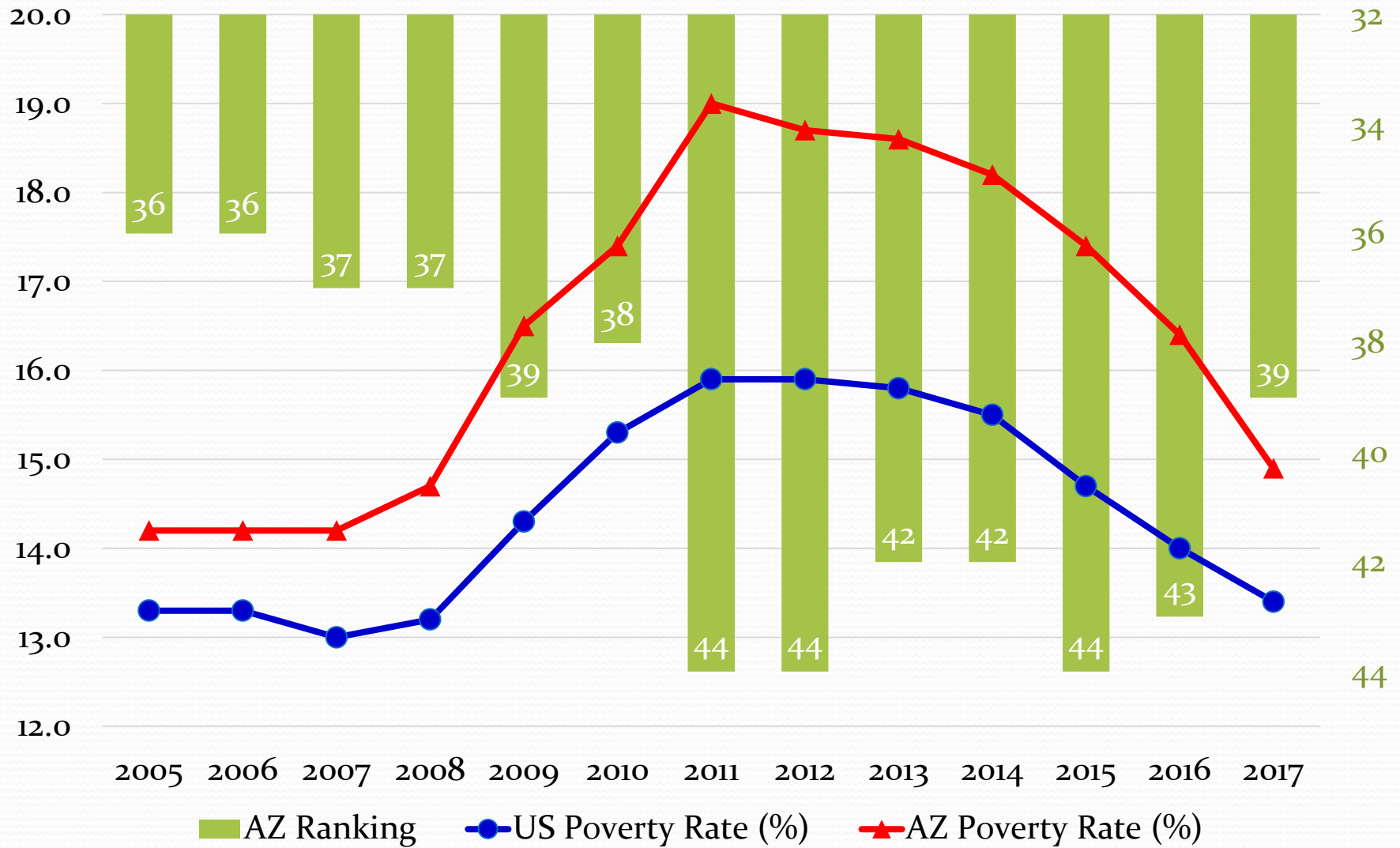
Population of 16 year olds and corresponding birth cohorts, United States



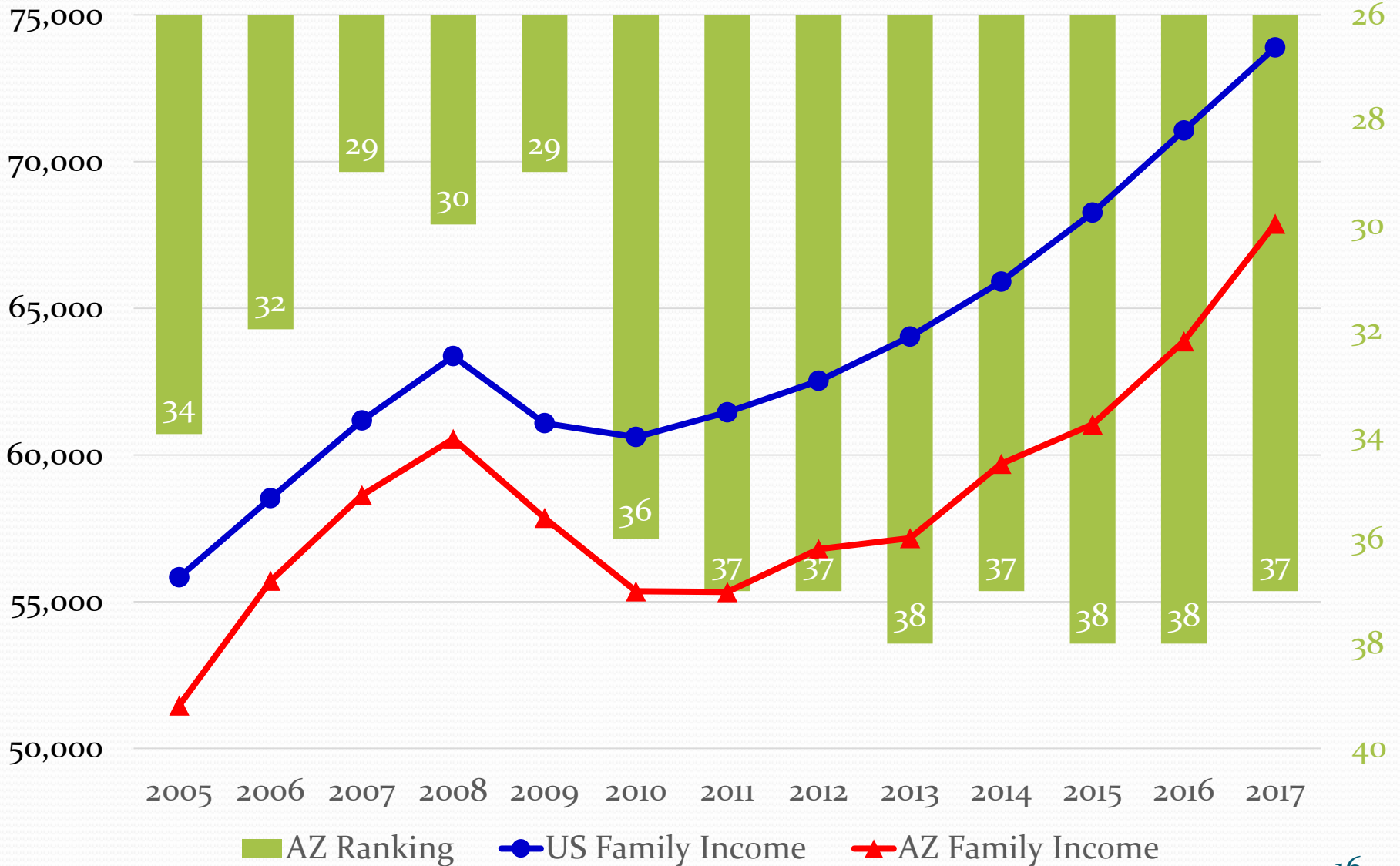
Arizona Public School Enrollment



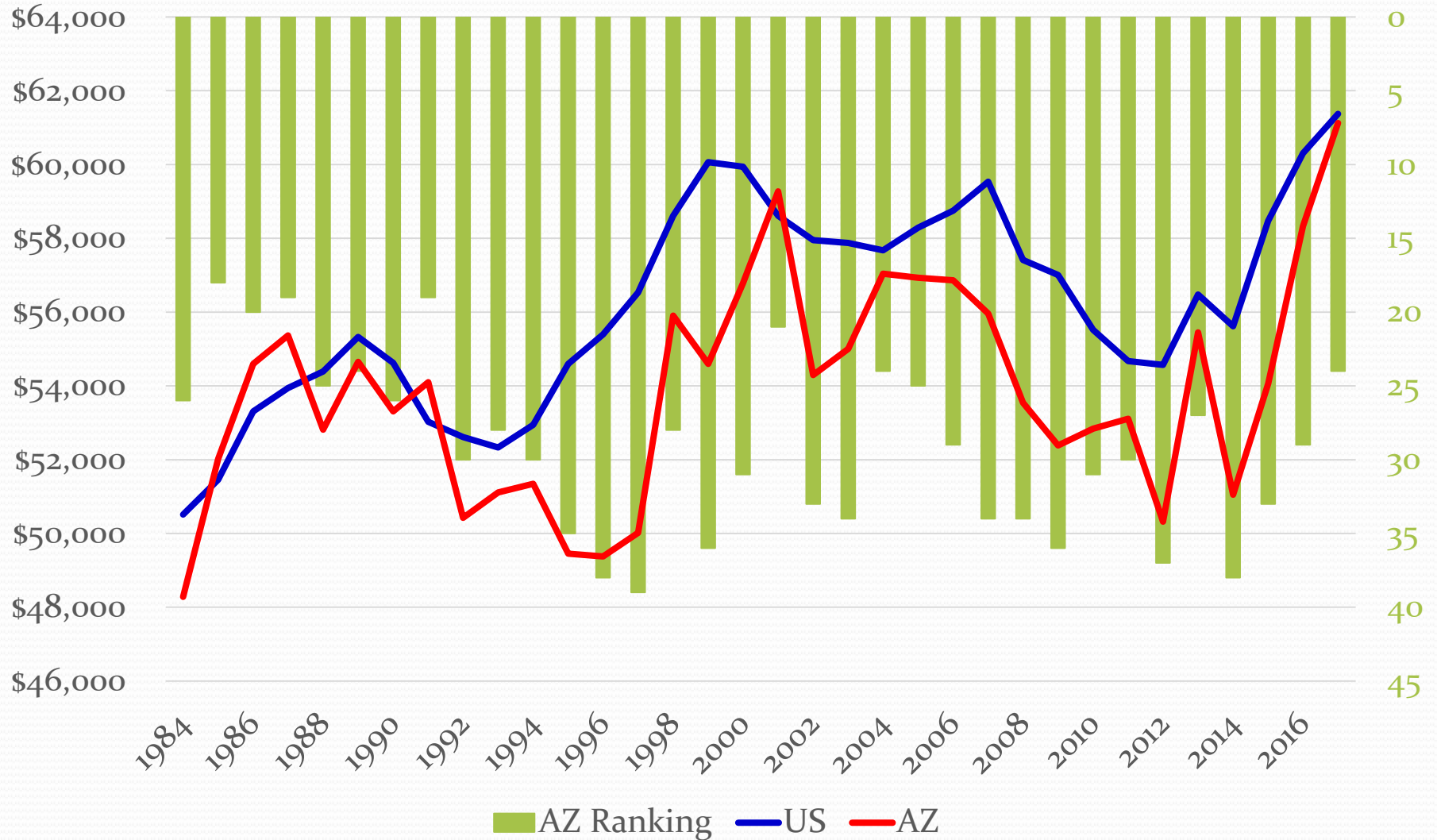
US and Arizona Poverty Rates



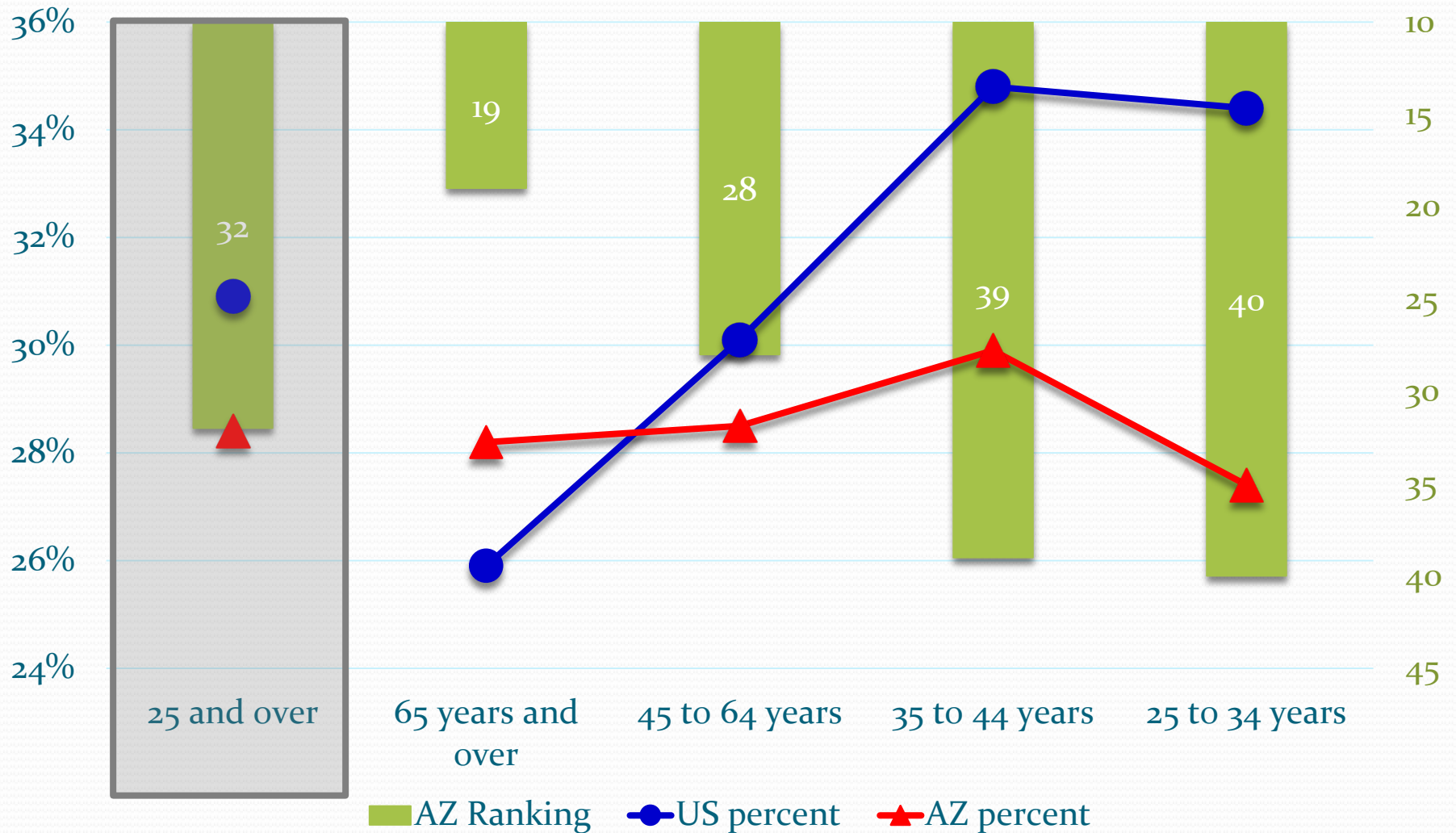
US and Arizona Median Family Income in Current Dollars



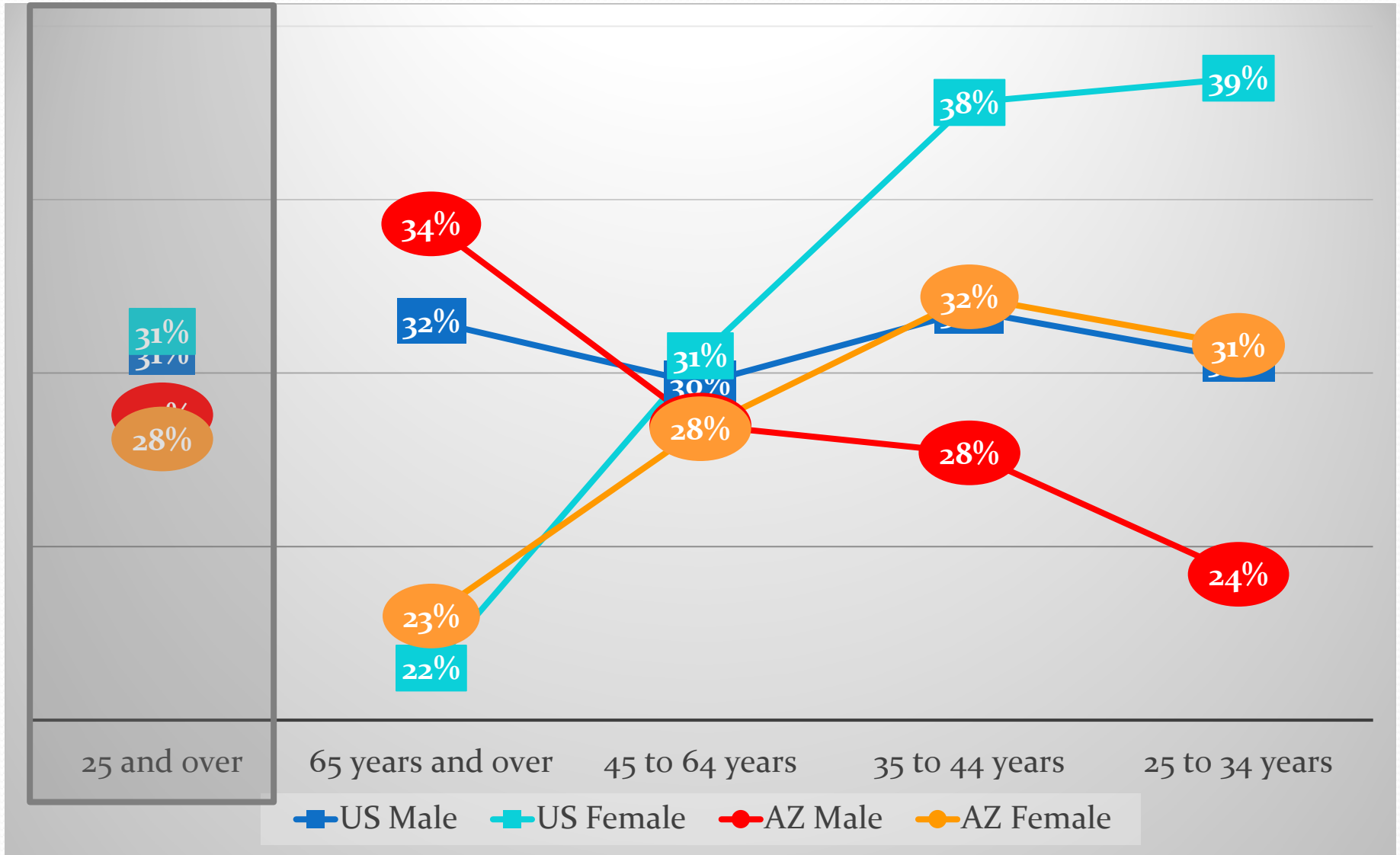
US and Arizona Real Median Household Income in 2017 Inflation Adjusted Dollars



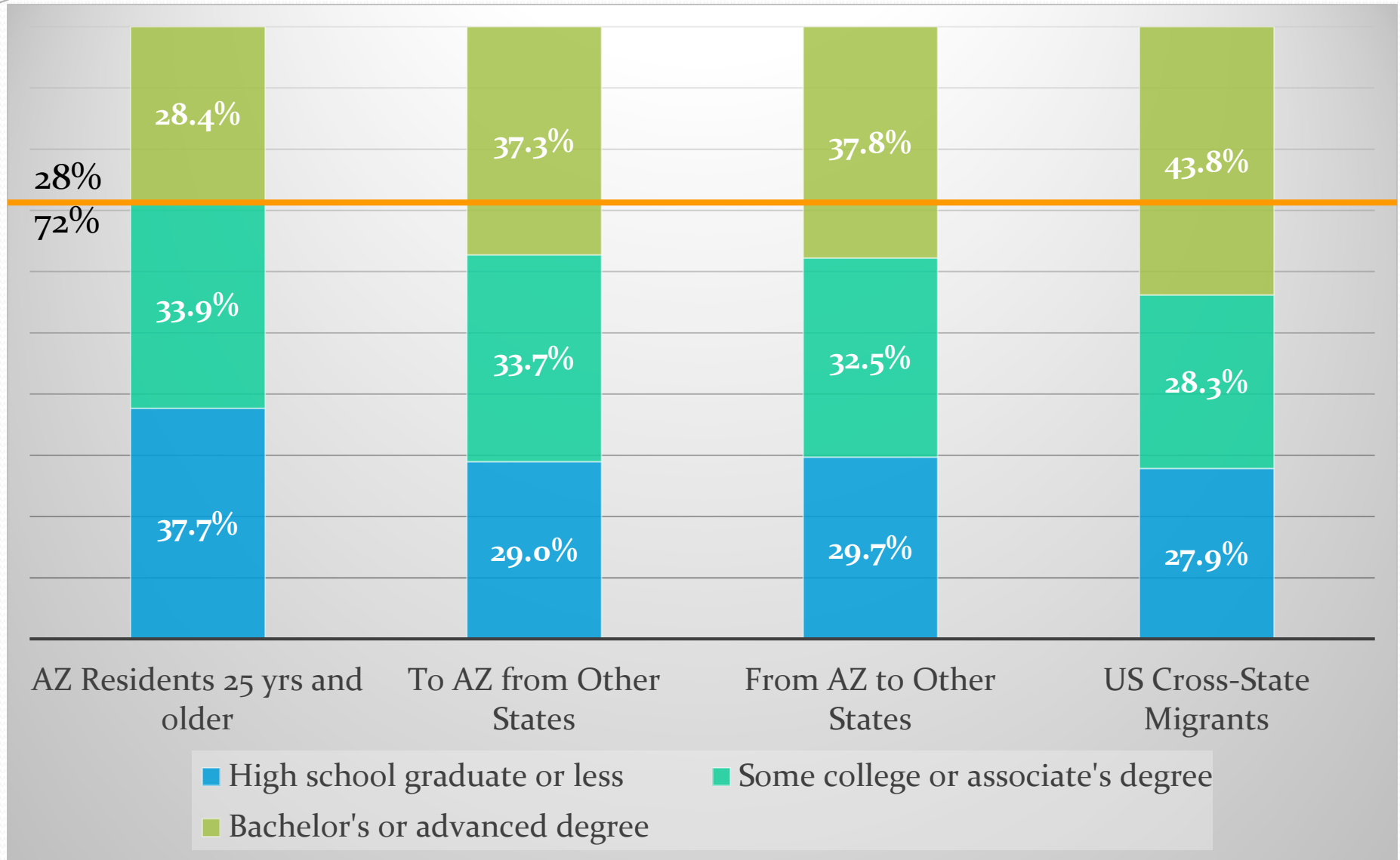
Population 25+ with Bachelor's Degree or Higher, by Age Group



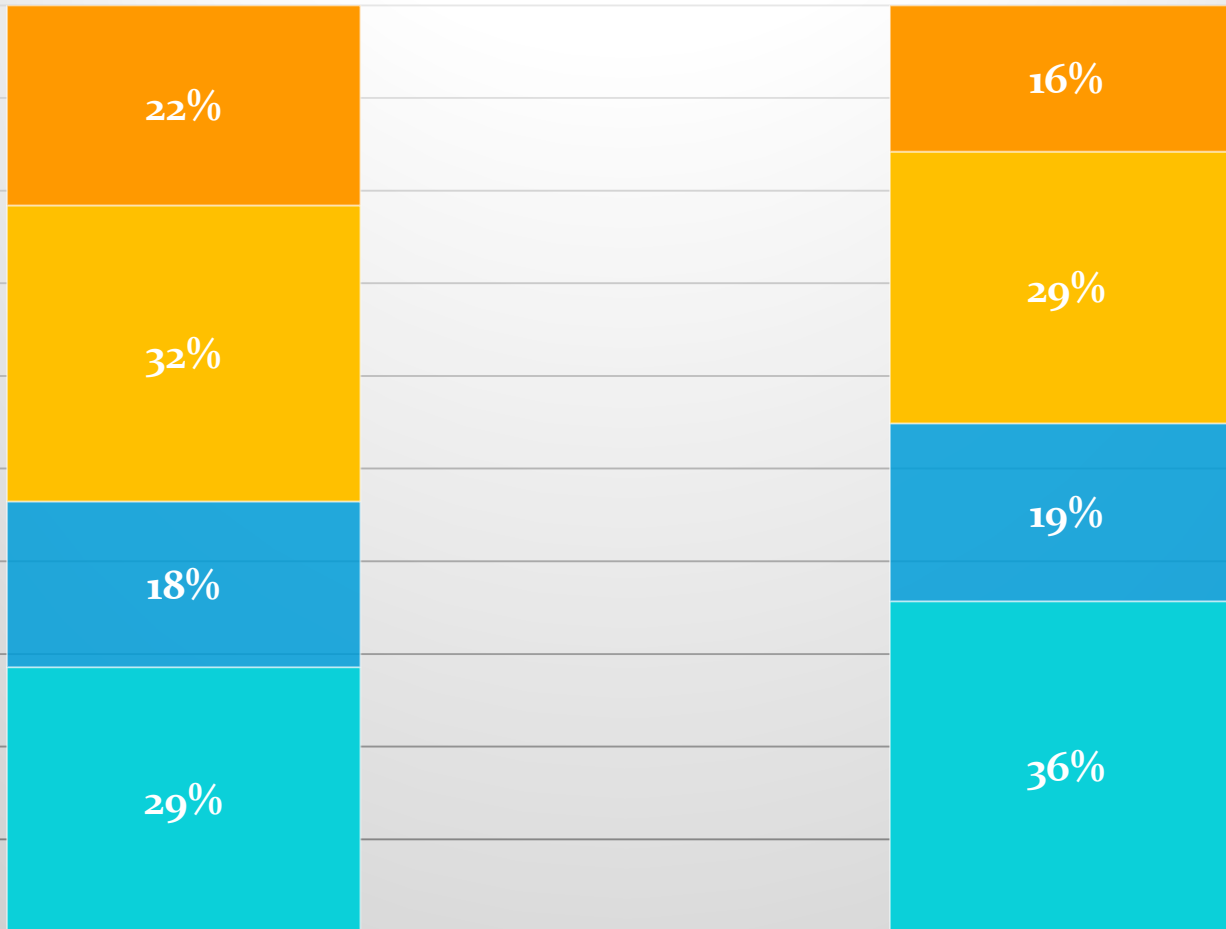
Population 25+ with Bachelor's Degree or Higher, by Gender and Age Group



Education Attainment by Mobility Status



Age distribution of cross-state movers

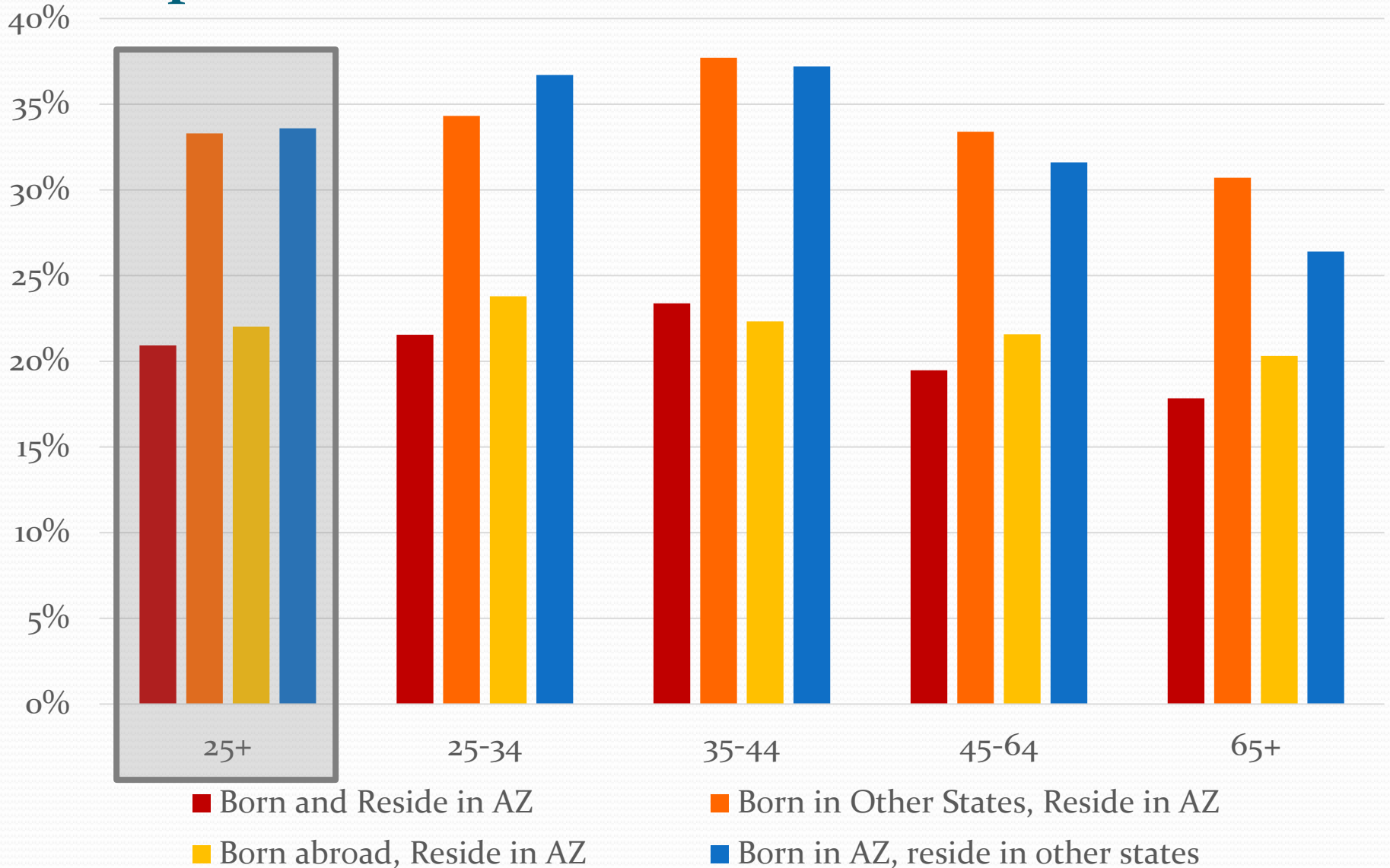


To AZ from Other States

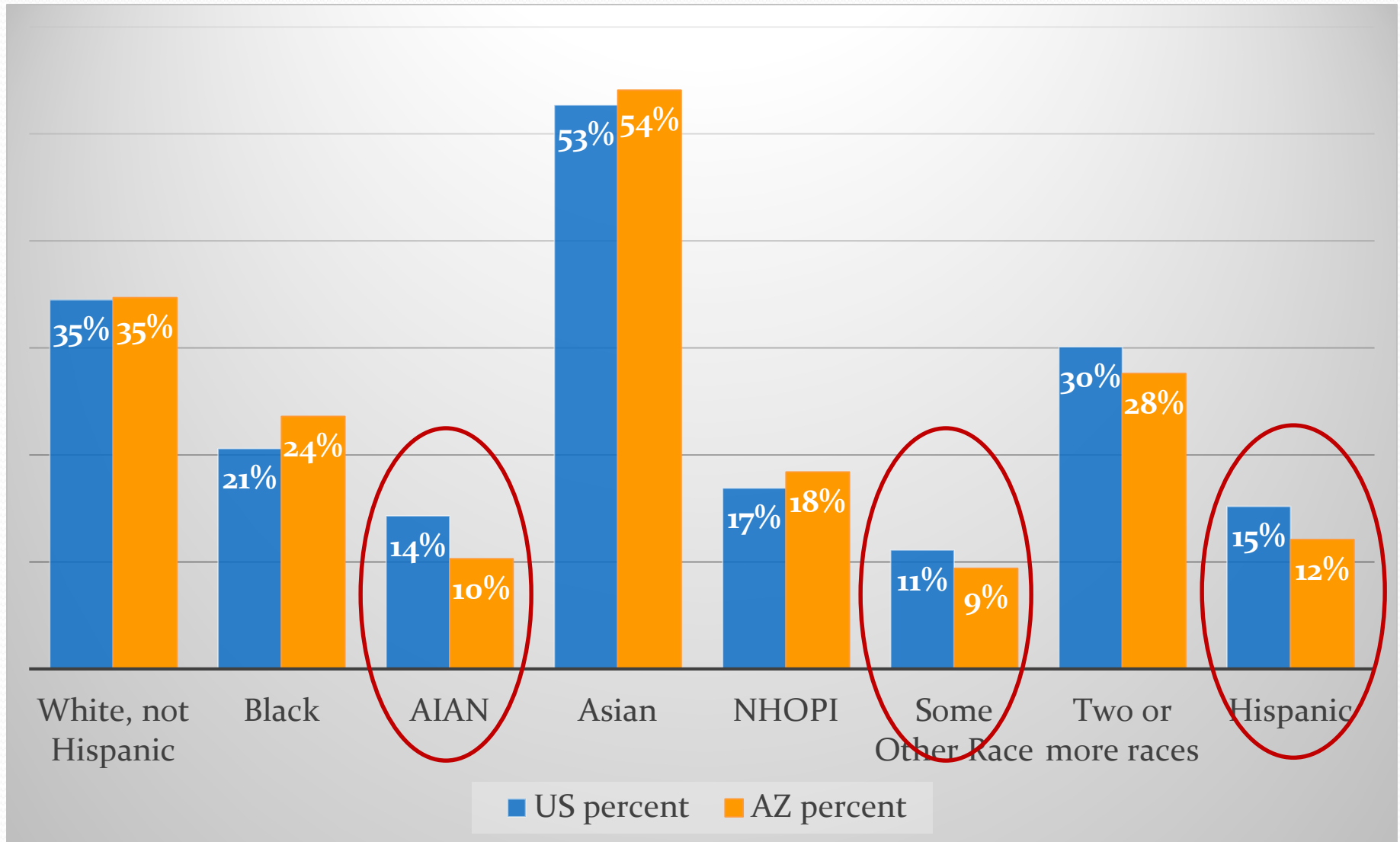
From AZ to Other States

■ 25-34 ■ 35-44 ■ 45-64 ■ 65+

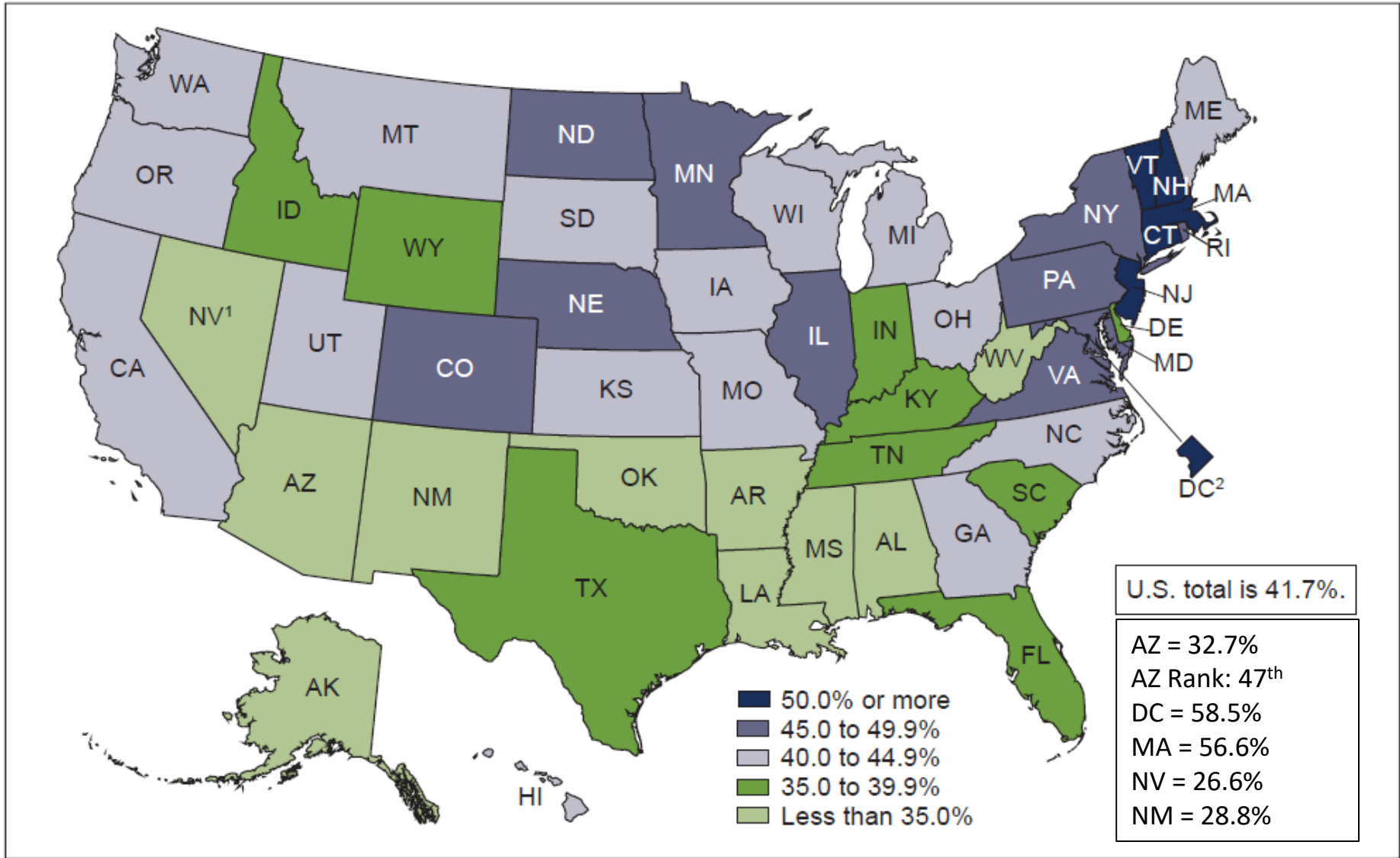
Percent with bachelor's or advanced degree by age, birth place, and residence



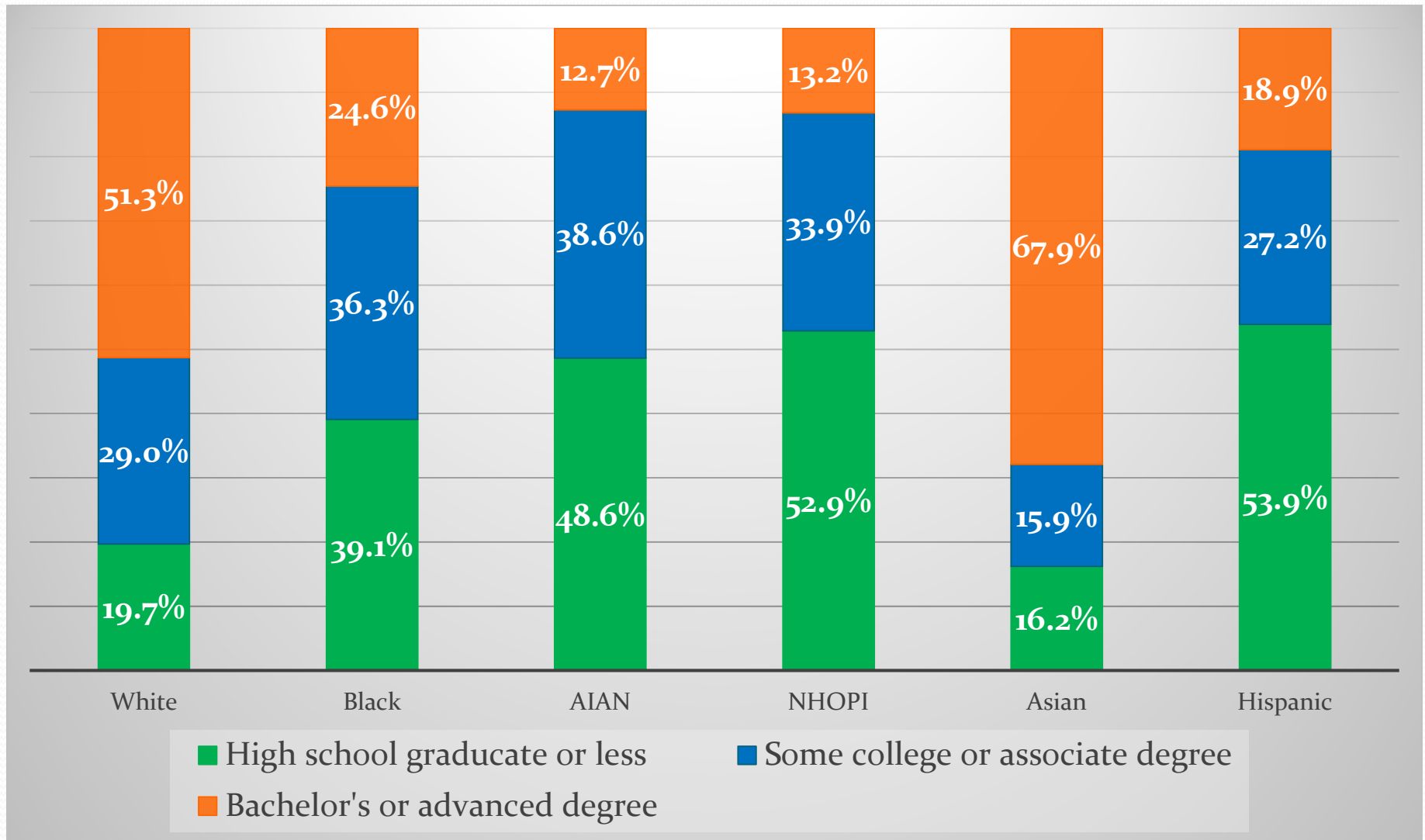
Population 25+ with Bachelor's Degree or Higher, by Race and Hispanic Origin



Percent of Births to Mothers with a Bachelor's or Advanced Degree, by State: 2017 (Mothers 25 Years and Over)



Births to Mothers 25 Years and Over, by Race/Hispanic Origin and Educational Attainment: United States, 2017



U.S. & Arizona Demographic Trends

OFFICE *of* ECONOMIC OPPORTUNITY

Jim Chang, State Demographer

602-771-1236, Jim.Chang@oeo.az.gov

Thara Salamone, Demographer

602-771-1161, Thara.Salamone@oeo.az.gov